



# MONTHLY MEMBERSHIP PROGRESS REPORT

District 110CO

Results as of: 8/31/2015

GMT: Elisabeth Haderer

LOCATION NETHERLANDS

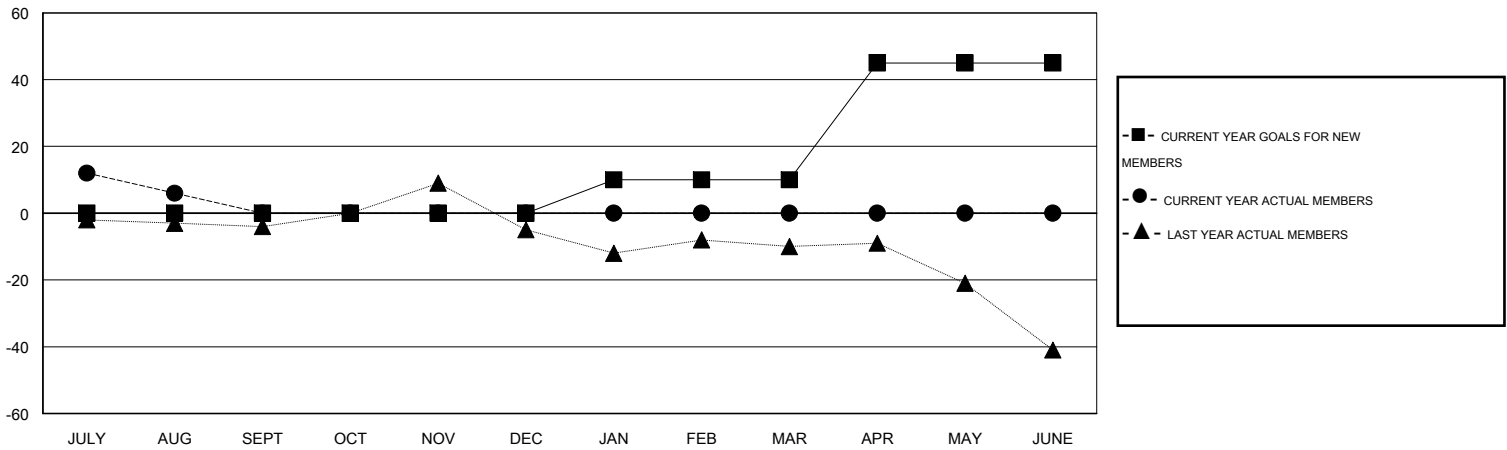
GMT CA 4

Clubs					Members				
RESULTS FOR 2015-2016					RESULTS FOR 2015-2016				
QUARTER	NEW CLUB GOAL	NEW CLUBS	DROPPED CLUBS	NET GAIN/LOSS	QUARTER	NEW MEMBER GOAL	CHARTER AND NEW MEMBERS ADDED	DROPPED MEMBERS	NET GAIN/LOSS
JULY/AUG/SEPT	0	0	0	0	JULY/AUG/SEPT	0	17	11	6
OCT/NOV/DEC	0	0	0	0	OCT/NOV/DEC	0	0	0	0
JAN/FEB/MAR	0	0	0	0	JAN/FEB/MAR	10	0	0	0
APR/MAY/JUNE	1	0	0	0	APR/MAY/JUNE	35	0	0	0

GOALS AND ACTUAL NEW CLUBS CUMULATIVE



GOALS AND ACTUAL MEMBERS CUMULATIVE



DROPPED CLUBS: 0	2 CLUBS OF 76 ADDED 1 OR MORE NEW MEMBERS	<u>GENDER DISTRIBUTION</u>	
<u>DROPPED MEMBERS</u>		MALE	1,786 (87.46%)
DECEASED	0	FEMALE	256 (12.54%)
CLUB CANCELLED	0	<u>FAMILY UNIT MEMBERS</u> 10	
OTHER	11	<u>HEAD OF HOUSEHOLD</u> 5	
TOTAL	11	<u>NON-HEAD OF HOUSEHOLD</u> 5	

[CLICK HERE FOR HEALTH ASSESSMENT DATA](#)